

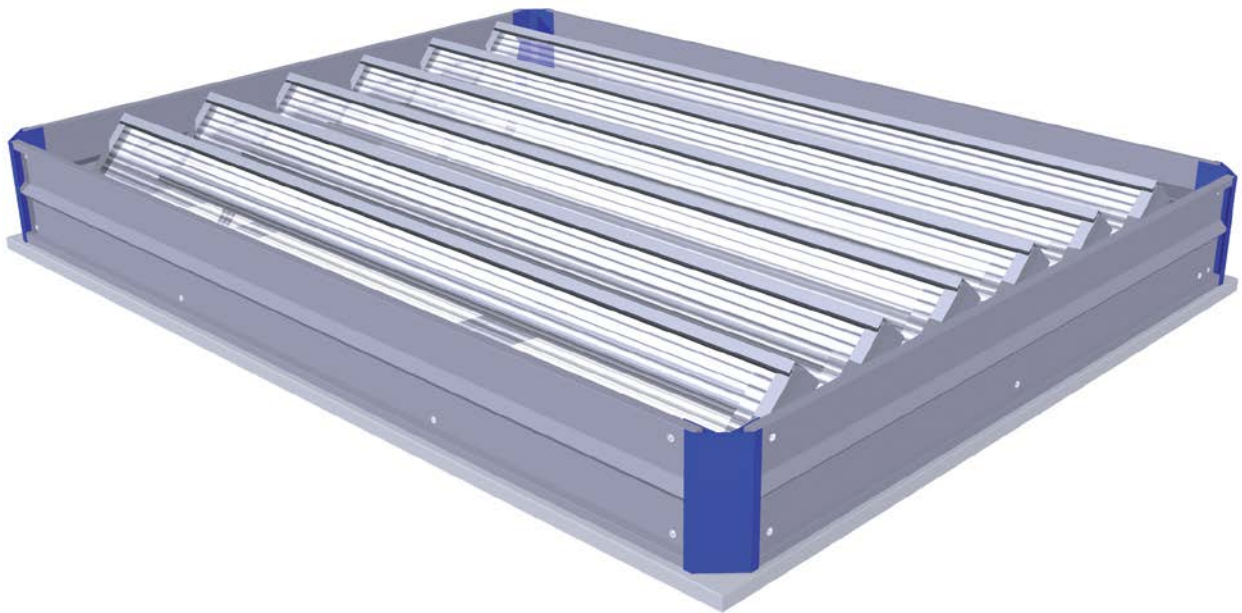


# Kingspan Eura

## Multifunctional louvred ventilator

### Data Sheet

Suitable for daily ventilation as well as smoke and heat exhaust for roofs and facades



Daylighting Solutions  
Natural Ventilation Solutions  
Smoke Management Solutions  
Service & Maintenance  
Building Automation

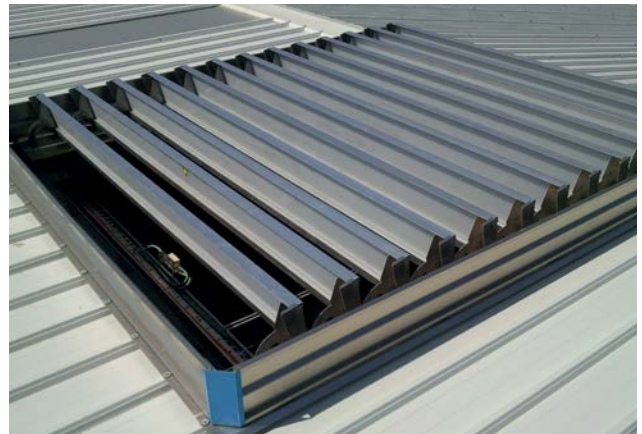
# Application

Kingspan Eura is a multifunctional louvred ventilator that extracts large volumes of warm air and smoke within a short period of time. The Eura is both suitable for air supply (façade) and air extraction (façade and roof). The fail-safe Eura is available with a variety of louver types, including a translucent design. The system offers a favourable price/performance ratio.

Application: from industrial buildings and offices to shopping centres and atria.

## Materials

Aluminium; tempered, sea water and corrosion-resistant (EN AW 5754). Corrosion-resistant bearings. Seal incorporating a weather-resistant sealing strip longitudinally and energy strips. The seal is applied in such a manner that there is no risk of freezing and offers a high level of draft-proof performance. The aluminium is completely corrosion-resistant and is supplied untreated as standard. If desired the Eura can be supplied in an anodised or powder-coated design (in any RAL colour). The Eura can also be designed to incorporate noise-damping wings and bird or insect mesh.



# Technical Specifications

## Controls

### Natural ventilation:

P	Single-action compressed air operation
P2	Double-action compressed air operation
M	Motor operation (24 Vdc of 230 Vac)
K	Cable operation

### Fire ventilation according to EN 12101-2:

PB	Single-action compressed air operation with fire function
P2B	Double-action compressed air operation with fire function
PB-FS	Single-action compressed air operation with fire function failsafe (up to 13 louvres)
PB-M	Single-action compressed air operation with fire function and motor operation
PB-10 bar	Single-action compressed air operation with fire function activated at $\geq 10$ bar
M24V	Motor operation 24V

## Regulations

The system has been tested and is certified in accordance with EN 12101-2.

## Base



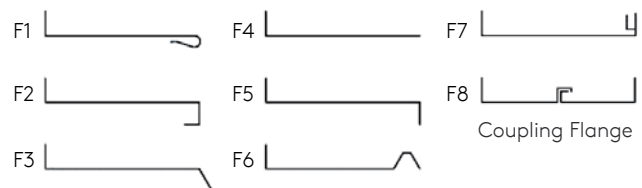
LB = Low Base

HB = High Base

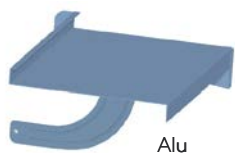
GHB = Insulated High Base

GHB with flange insulation

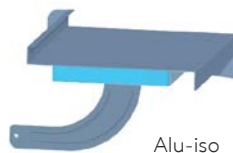
## Flanges



## Louvre types



Alu



Alu-iso



Sandwich 16mm

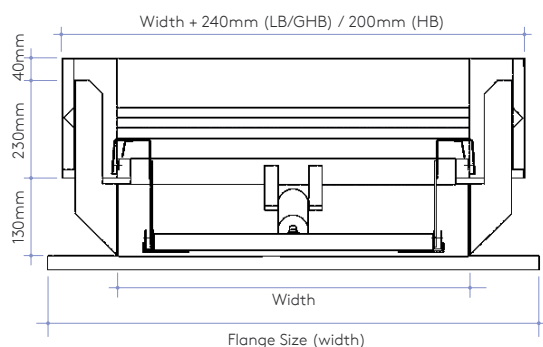


Isolux 8 / 16mm

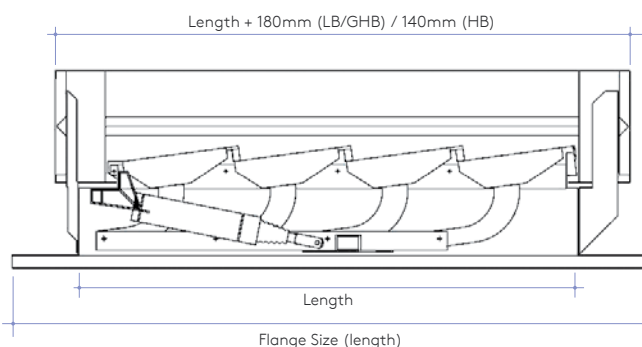


Single glass 3.3.2

## Cross Section



## Longitudinal Section



# Technical Specifications

## Dimensions Ventilator (mm)

Type LB*/GHB	Width (mm)	Number of louvres														
		3	4	5	6	7	8	9	10	11	12	13	14	15	16	17
		Length (mm)														
030	300	720	940	1160	1380	1600	1820	2040	2260	2480	2700	2920	3140	3360	3580	3800
060	600															
120	1200															
180	1800															
240	2400															
HB	Width	Length (mm)														
030	340	760	980	1200	1420	1640	1860	2080	2300	2520	2740	2960	3180	3400	3620	3840
060	640															
120	1240															
180	1840															
240	2440															

\* LB 14 through 17 louvres for assessment: applicability depending on installation situation. Intermediate width dimensions possible.

## Aerodynamic Surface (m²)

Type		Number of louvres														
		3	4	5	6	7	8	9	10	11	12	13	14**	15**	16**	17**
030	LB/GHB	0.14	0.18	0.22	0.26	0.30	0.34	0.39	0.43	0.47	0.51	0.55	0.59	0.64	0.68	0.72
	HB	0.16	0.21	0.26	0.30	0.35	0.40	0.45	0.49	0.54	0.59	0.63	0.68	0.73	0.78	0.82
060	LB/GHB	0.27	0.36	0.44	0.52	0.60	0.69	0.77	0.85	0.94	1.02	1.10	1.19	1.27	1.35	1.46
	HB	0.31	0.40	0.48	0.57	0.66	0.75	0.84	0.93	1.02	1.10	1.19	1.28	1.37	1.46	1.57
120	LB/GHB	0.54	0.71	0.88	1.04	1.21	1.38	1.54	1.71	1.90	2.07	2.24	2.41	2.58	2.75	2.92
	HB	0.59	0.77	0.94	1.11	1.28	1.45	1.62	1.80	2.00	2.17	2.35	2.52	2.70	2.87	3.05
180	LB/GHB	0.82	1.07	1.32	1.56	1.81	2.06	2.35	2.60	2.86	3.11	3.36	3.62	3.87	4.12	4.45
	HB	0.88	1.14	1.39	1.65	1.90	2.16	2.45	2.71	2.97	3.23	3.49	3.74	4.00	4.26	4.59
240	LB/GHB	1.09	1.42	1.75	2.09	2.42	2.80	3.13	3.47	3.81	4.15	4.49	4.90	5.24	5.58	5.93
	HB	1.17	1.51	1.84	2.18	2.52	2.90	3.25	3.59	3.94	4.28	4.62	5.04	5.39	5.74	6.09

Indicated C<sub>v</sub> values at upstand height 350 mm.

\*\* aerodynamic coefficient (C<sub>e</sub>) 14 through 17 louvres based on extended wind baffle.

## Weight per ventilator (kg)

Type	Number of louvres														
	3	4	5	6	7	8	9	10	11	12	13	14	15	16	17
030	10	12	14	16	18	20	22	24	26	28	30	32	34	36	38
060	19	23	27	30	33	36	39	42	45	48	51	54	57	60	63
120	28	33	38	42	47	51	56	60	65	69	74	78	82	86	90
180	36	42	48	54	60	66	72	78	84	90	96	102	108	114	120
240	45	52	59	66	73	80	87	94	101	108	115	122	129	136	143

Example type indication: Eura 180-10/GHB/M24V/F5 means: Eura louvred ventilator, width 1800 mm, length 2260 mm (10 louvres); an isolated high base; 24V motor operation, F5 flange.



## Project imagery



---

## INTERNATIONAL

**Kingspan Light + Air**

E: [kla.international@kingspan.com](mailto:kla.international@kingspan.com)

[www.kingspanlightandairinternational.com](http://www.kingspanlightandairinternational.com)

For the product offering in other markets please  
contact your local sales representative or visit  
[www.kingspanlightandair.com](http://www.kingspanlightandair.com)

Care has been taken to ensure that the contents of this publication are accurate, but Kingspan Limited and its subsidiary companies do not accept responsibility for errors or for information that is found to be misleading. Suggestions for, or description of, the end use or application of products or methods of working are for information only and Kingspan Limited and its subsidiaries accept no liability in respect thereof.